



The  
Rhine

Research, Education, & Community.





*In the history of more than one branch of research a long-unrecognized phenomenon has turned out to be the key to a great discovery. The stone which a hasty science rejected has sometimes become the cornerstone of its later structure.*

J.B. Rhine

## Our Mission

The Rhine Research Center explores the frontiers of consciousness and exceptional human experiences in the context of unusual and unexplained phenomena. The Rhine's mission is to advance the science of parapsychology, to provide education and resources for the public, and to foster a community for individuals with personal and professional interest in psi.

## Parapsychology: The Study of ESP and PK

### ESP

Extrasensory Perception (ESP) is the ability to acquire information without using the known senses.

- In situations when another person is involved, it may be considered telepathy, or mind-to-mind communication.
- When it is knowledge of a distant place or event, the term clairvoyance or remote viewing is often used.
- In cases where the information implies a future event, it is called precognition.
- Clairvoyance is also used to read objects, such as at archaeology sites, someone's possession, etc.

### PK

Psychokinesis is the direct influence of the human mind on the environment. In rare cases, this may involve obvious movement of objects; more contemporary research studies involve PK influence on atomic or electronic processes.

### Psi

Psi is an umbrella term that encompasses all ESP and PK phenomena. There appears to be an underlying connection between these phenomena, and when researchers describe this connection, they use the term psi.

## RESEARCH AT THE RHINE

# History and **Current Directions**

After 85 years of academic research in the Rhine lab and elsewhere in the field of parapsychology, researchers at the Rhine recognize that psi is real, repeatable, and observable in controlled scientific experiments. No further proof is needed to demonstrate the existence of ESP or mind-matter interaction, and research efforts should be focused on the mechanisms that enable these events and the psychology of people who have these experience.

Why do some people experience psi events more than others? Are there environmental or psychological factors that affect these activities? Can we measure biological changes while somebody is experiencing psi? Is there an energy or detectable force that enables ESP or mind-matter interaction to occur?

Research at the Rhine is focused on the lived experiences of people who describe psi events including mind-matter interaction and energy healing. Researchers are also exploring the cognitive processes that are involved in ESP perception, whether conscious or unconscious. In addition, Rhine researchers are using the latest technology to examine environmental and physical forces that may be the underlying force or energy behind distance healing, chi energy, or even mind-matter interaction.

*“Psi is at once the spiritual, immaterial component of the human personality and at the same time, a new energetic element in nature.”*

J.B. Rhine

## The Energy behind **Energy Healing**

### The Rhine Bioenergy Lab

The Rhine was on the forefront of this field of investigation and continues to explore the frontiers of subtle energy research. With an expansion of the current bioenergy lab, the Rhine is looking beyond individuals who can purposely increase the emission of biophotons to explore the environment around the healers and the targets of their healing activities. In addition, other physiological factors are being measured to provide more information about how biophotons are associated with different states of mind or physiological activities. This is an ongoing project. Data collection began over 10 years ago, and the Rhine continues to explore the nature of the human subtle energy field. Biophoton research has become an important factor in biological studies of the mechanisms of healing and potential information transfer in the human body.

Funding Requirements: \$30,000 - \$70,000 per year



## RESEARCH AT THE RHINE

# Biology, Emotions, and Psi

Exploring the physiology of participants who are demonstrating psi can help us to understand the unconscious activities in the body that appear to contribute to psi. For example, when people become anxious, their heart rate and skin conductance will change while the participant may not even notice these changes. By monitoring the physiology of participants while they are performing psi activities in the lab, we can learn about the mechanisms of psi and why it can sometimes appear inconsistently in controlled studies.

Two current projects are planned to explore the physiological and emotional factors that will help us to better understand psi. One project is exploring the relationship between bioenergy (as previously mentioned) and physical factors like heart rate variability, body temperature, electrodermal activity, and blood flow. The second project is measuring similar factors and relating them to emotional experiences and unconscious effects on electronic devices. Both projects are waiting for financial support.

The Rhine is seeking support to purchase the latest equipment to monitor and record physiology and evaluate the correlations between psi events and physiological measures.

Funding Requirements: Approximately \$45,000 - \$60,000 for each project

# Effective Healing Evaluation

Energy healers meet at the Rhine on a regular basis to learn energy healing methods, practice their techniques, and work with volunteers to assist with their practice sessions. Some volunteers have reported benefits from these sessions, and some have even reported pain relief and the alleviation of long-term symptoms. Researchers will work with this healing group to evaluate the effectiveness of the healing methods using a controlled approach to healing in a laboratory environment.

Related work is being done in the Rhine Bioenergy Lab with measurements of the human biofield.

Funding Requirements: \$25,000 - \$35,000



*The mind is still a mystery....Until we know more about ourselves, we must recognize that we are moving forward blindly in a world whose patterns are constantly more complex and hazardous...*

J.B. Rhine

## Psychokinesis (PK) : Existence, Limitations, and Mechanisms

Researchers at the Rhine have observed psychokinesis (PK) with several different participants in a controlled setting. Effects have been observed repeatedly on an Egely Wheel (a pinwheel device, like a psi wheel, that is commercially produced), and Rhine researchers have not found any physical forces responsible for the observed effects. There is an indication from another lab that there may be physical forces that are affecting this device, and research is continuing to determine what is making the wheel turn.

In addition, one participant has demonstrated a consistent micro-PK effect. This participant is demonstrating effects on random number generators and other electronic systems. The effect is produced on-demand and the results far exceed variations expected by chance. With a participant that can consistently demonstrate this effect, it is possible to begin to explore the nature of this effect and the limitations. Controlled studies are being conducted to determine whether the observed effect is magnetic, electrical, or related to heat or light. These studies are being conducted in the laboratory but also from a distance of hundreds of miles using an internet connection.

Funding for this project would include purchasing equipment to construct shielded containers, detection devices for subtle energies, and support for the expert researchers and gifted participants who would perform this research.

Funding Requirements: \$65,000 - \$100,000



# The Experience of Healing

What is healing? Does it involve more than a physical effect? Is there such a thing as healing the emotional or spiritual systems? How do the healers experience the healing process?

This qualitative study will collect information from a group of healers at the Rhine to learn more about their experiences and to attempt to create a general description of healing from multiple perspectives. The final goal is to understand the healing process and to describe the concept of healing in terms used by healers and patients.

Funding Requirements: \$30,000 - \$45,000

*Science is not only compatible with spirituality: it is a profound source of spirituality.*

Carl Sagan



# Rhine Education Center

## Mission

The Rhine Education Center is dedicated to providing a high-quality educational opportunity for students around the world who are interested in parapsychology. Professional courses are presented in an online environment to enable adults to attend the courses at their convenience and to interact with the faculty and students to provide a complete academic experience.

## Why Choose the Rhine Education Center?

The Rhine Education Center is backed by the integrity and knowledge of the Rhine Research Center which is the oldest and most respected parapsychological research center in the United States. Since 1935 the Rhine has provided a sound scientific basis for the phenomena studied by parapsychologists, and the academic quality of the research at the Rhine is the foundation for modern parapsychology.

Courses with the Rhine Education Center are provided to give students the opportunity to learn about the science and practices of parapsychology in a professional and fun environment. To adhere to this goal, the Rhine Education Center offers academic certificates in parapsychology as well as adult-education courses for those who would like to learn more about parapsychology but may not have the time or interest in pursuing a more academic program.

We recognize that our student base is diverse, and we are providing classes to better suit the needs of all our students. Academic studies will be complemented by professional seminar courses to allow students to learn about more topics with the assurance and integrity of the Rhine Education Center.

## Certificate Programs Available

The Rhine Education Center has a number of certificate programs that are available to students. Certificates are available in Academic Parapsychology, Parapsychology Research, History of Parapsychology, and Knowledge of Psi Phenomena. For complete information, visit the Education Center website at [www.RhineEdu.org](http://www.RhineEdu.org)

*For nearly a century, The Rhine has been the bellwether for frontier explorations of the mind and its vast potentials. Participating in both the unique educational and research programs gave me the skills and courage to conduct pioneering research in remote viewing, ganzfeld, and psychic healing. Rhine Research Center changed my life and empowered me to cultivate a growth mindset, question my assumptions, and contribute to the dynamic field of parapsychology. This vital, unique, and essential organization gave me a sense of possibility that has served me well.*

Marilyn Schlitz, Ph.D.

## Diversity of Courses

Eight-week courses are supplemented by four-week courses to better address the desires of our students. In addition, continuing education and seminar courses are being offered to provide a diversity of courses related to the field of parapsychology. Academic courses are offered, and all the courses are professionally provided by highly qualified and experienced instructors.

## Tuition Assistance

Support for the Rhine Education Center comes from the course tuitions, but some students cannot provide even the very affordable tuitions for the courses. Students who can express an interest and a financial need may qualify for a scholarship from the William G. Roll Scholarship Fund for Education in Parapsychology. This fund is administered by the Rhine Education Center and supported by generous donors.

The Rhine Education Center focuses on continuing to provide affordable educational opportunities for any student who has an interest in expanding their education and knowledge of the science and experiences studied in the field of parapsychology.

Funding Requirements: Approximately \$2,000 - \$5,000 in tuition assistance is requested each year

# Engaging Our Community

Each month, the Rhine presents researchers and experiencers from around the world in online events. Members of the Rhine community worldwide have seen speakers such as Dr. William Bengston, Dr. Christine Simmonds-Moore, Dr. Edwin May, Dr. Callum Cooper, and Dr. Julia Mossbridge discuss their research work and their perspectives on topics from consciousness to healing to the relationship between parapsychology and physics. In addition, fun events discussing Remote Viewing & UFOs (Paul H. Smith, Ph.D.) and Loyd Auerbach's favorite ghost stories bring people together to learn more about unusual phenomena and provide a wonderful opportunity to connect with like-minded people.

Hosted by Executive Director John G Kruth and Assistant Director Susan Freeman, these events are presented using the latest technology to provide an excellent experience for our viewers. All events are also recorded and included in the Rhine Video Library at [www.rhine.org](http://www.rhine.org). Over 100 videos are available to Rhine members, and a number of videos are available publicly to everyone.

## Funding Events

Speakers for the Rhine Educational Events generously donate their time and expertise to support the Rhine, and their support is invaluable. The technology and funding of this project are minor compared to the wonderful opportunities they provide to the greater community.

Funding Requirements: Approximately \$2,000 - \$5,000 per year

# Online Meetings

Many meetings at the Rhine are now online, and the activities are as vibrant as ever with participants throughout the world, from Australia and India to Canada and across the U.S.A.

## Psychic Experiences Group (PEG)

PEG monthly meetings are dedicated to the discussion of psi and consciousness through the sharing of personal experiences. We follow a simple policy of honesty, privacy, and sharing without judgment. Shared experiences have touched on topics such as telepathy, healing, precognition, extended senses, psychokinesis, remote viewing, dreams, haunting, reincarnation, near death experiences, out-of-body experiences, and other unsolved mysteries. Personal stories are shared, ideas and inspiration begin to flow for developing our extended psi senses, and for finding creative ways to be of greater service in the larger community.

## Dream Study Group (DSG)

The Dream Study Group meets monthly to facilitate understanding of the types of dreams we have and what they may tell us about ourselves, both individually and collectively. Participants are encouraged to maintain a dream journal as we develop techniques for working with dreams. Over time, most categories of dreams will be discussed from publications and personal experiences, with particular attention to shared, precognitive and clairvoyant psychic (PSI) dreaming.

## Remote Viewing Group (RVG)

Remote viewing is a mental faculty that allows the perception of things otherwise inaccessible to normal senses due to distance, time, or shielding. The Rhine Remote Viewing Group meets monthly to discuss remote viewing happenings and to work on a few practice targets.

All skill levels welcome!



# A Long View...

The implications of our work extend far beyond scientific research and educational programs. Indeed, our work speaks to a deep hunger in our global society for connection, purpose and possibilities. We seek to contribute to humanity's deepest longings and questions about who we are, and what we as human beings are capable of becoming.

Our work is part of a new worldview that seeks to build bridges between us, to clarify the linkages between humanity and the natural world, and to expand the scope of fundamental interconnectedness. We are inspired by the world's wisdom traditions, which speak to the essence of our human experience and offer paths to our shared unfolding. Likewise, we are grounded in the discernment and care that rests in the methods and approaches of western science. And we are awed by both the opportunities and the challenges that lie ahead as we seek to find our place in an unfolding universe filled with mystery and wonder.

At the core of our story is an awakening to the richness that lies ahead. For over eight decades, the Rhine has been a trusted pathfinder for bridging science and spirituality in order to expand our understanding of human capacities. We are bellwethers in an inquiry that connects us all and sheds light on our emerging new worldviews. Amid environmental crises, a devastating public health pandemic, and global social unrest, our programs offer a fresh take on age-old problems.

The Rhine is relevant today, more than ever, in the face of global challenges. Climate change, rapidly advancing technologies, the threat of pandemic, disease and international conflict -- there is a greater need to expand our understanding of the mind's capabilities and the ways in which subtle energies connect us to one another, and to follow the leads hinted at in ESP and PK research that suggest possibilities for healing, both physically and spiritually.

## Holding a Vision for the Future

At the Rhine, our vision is optimistic. We are dedicated to utilizing our research findings and educational programs to advance solutions to our most urgent questions, revealing the fundamental ways in which we are interconnected. Advancing the frontiers of consciousness, mind, and spirit offers a contribution to what can be the next great unfolding.

It takes visionaries with a strong commitment to a new story for humanity to fund our work. Courageous leaders see the significance of this work and want to help advance it by keeping the programs thriving, now and into the future. We look to interested individuals, philanthropists, family foundations, institutions and grants to support our pioneering work.

*If we could free the mind from the absolute restrictions of the mechanisms of the senses, the effect upon the science of the mind—psychology—and upon man's whole view of himself would be almost too great to conjecture.*

J.B. Rhine



# How Can You Help?

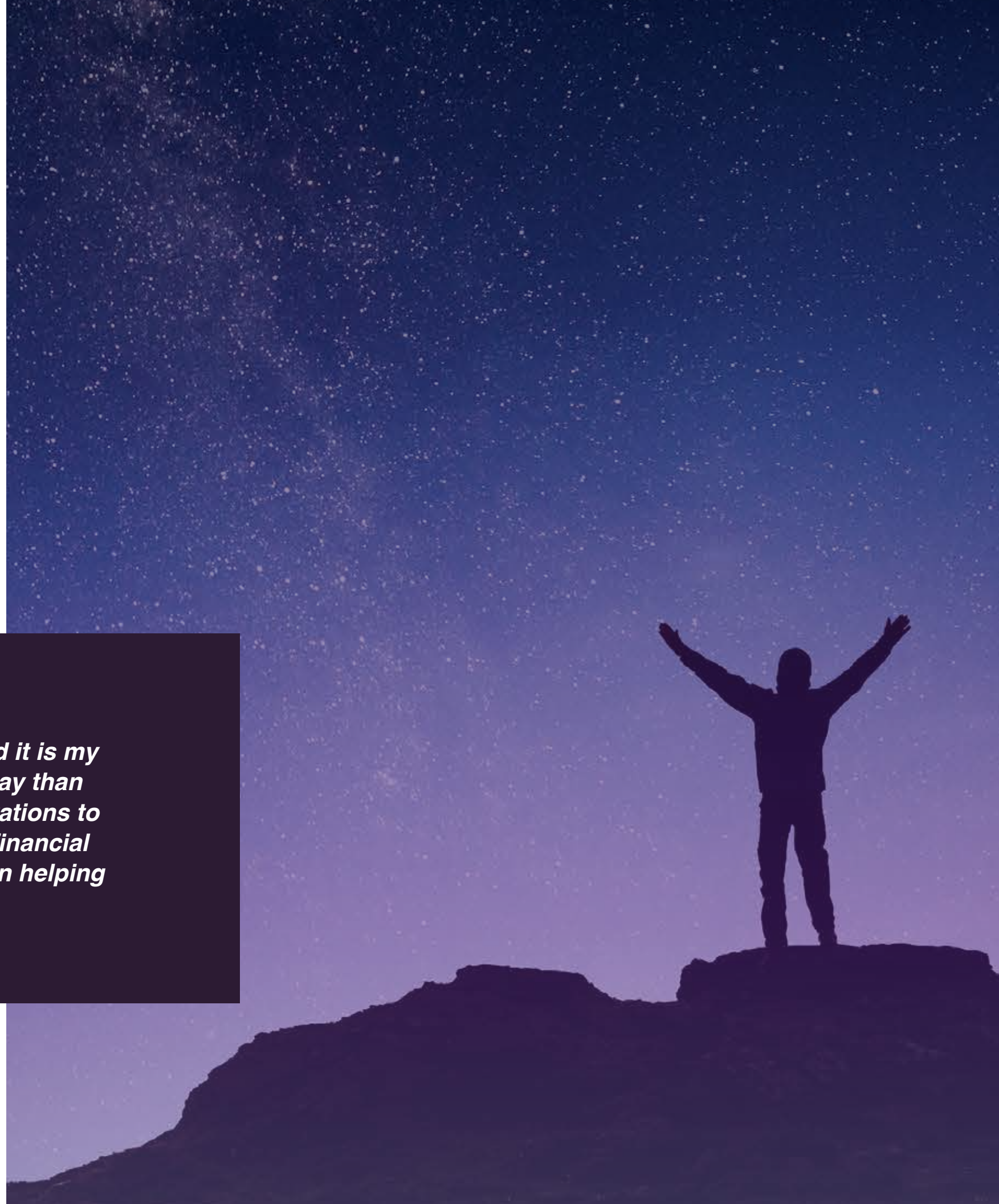
Our bold dreams require the energy and commitment that is found in financial investments into this work. Every gift is important. We need your help.

Here are some options:

- Unrestricted support for the Rhine
- Support for a specific project
- A planned gift, including a provision for the Rhine Research Center in your will or trust, is one of the easiest ways to make a long-term contribution to our work without impacting your current finances
- Share this information with others who may be able to help

*Rhine Research Center has left an indelible mark on history and it is my belief that these remarkable programs are more important today than ever before. With our support, they will continue to serve generations to come. Making a planned gift in your estate planning will offer financial support for the Rhine into the future. I hope others will join me in helping fund this research and education for years to come.*

Jane Livingston, Ph.D.





# The Rhine Through the Decades

## 1930s:

- First ESP tests of telepathy and clairvoyance utilizing scientific protocols (1930-1934)
- *Extra-Sensory Perception* by J. B. Rhine, a monograph reporting the initial research and results of ESP tests (1934)
- The Parapsychology Laboratory is established at Duke (1935)
- *Journal of Parapsychology*, the first peer-reviewed journal for the field (1937)
- The first tests of precognition reported in *JP* (1938)

## 1940s:

- *Extrasensory Perception After Sixty Years*, 1940, by J. B. Rhine and colleagues. A history of psi research from the 1880s to 1939, including responses to critics of aspects of the Duke research
- PK research published in *Journal of Parapsychology* (1943)
- *The Reach of the Mind*, by J. B. Rhine (1947)

## 1950s:

- Research on biology of psi -- survey of animal behavior suggesting psi (anspi), and exploratory anpsi experiments with cats, dogs, and birds
- J. B. Rhine initiated the founding of the Parapsychological Association (1957)
- The Rhine Hosted the Parapsychological Association conference in Durham in 1958

## 1960s:

- Foundation for Research on the Nature of Man (FRNM), a privately funded research facility founded after Rhine's retirement from Duke. Institute of Parapsychology established as research arm of FRNM
- The Rhine Hosted the Parapsychological Association conference in Durham in 1962

## 1970s:

- Watkins & Watkins conducted pioneering research on psychic healing
- Marilyn Schlitz conducted the first remote viewing experiments outside the SRI program and conducted the first Ganzfeld studies at the Rhine
- The Rhine Hosted the Parapsychological Association conference in Durham in 1971
- Summer Study Program for Parapsychology, an 8-week program of classes on parapsychology (1974-2002)

## 1980s:

- JB & Louisa Rhine pass away in the early 1980's and new leadership takes shape
- Research continued exploring the mechanisms enabling psi phenomena under the leadership of Richard Broughton as the Research Director
- Executive Director Ramakrishna Rao established connections with parapsychology research in India



# The Rhine Through the Decades cont'd

## 1990s:

- FRNM was renamed Rhine Research Center in 1995 to honor the Rhines
- The Rhine Hosted the Parapsychological Association conference in Durham in 1995
- Research examining the Ganzfeld, brain hemispheres, and other psychological and physiological areas
- First Psychic Experiences Group met, setting a foundation for an expanded Rhine community
- John Palmer begins as Editor, *Journal of Parapsychology* (1994-1997)

## 2000-2009:

- In 2002 Rhine Research Center moves to a new building with two Ganzfeld suites on Campus Walk Drive near the Duke West Campus
- Ganzfeld and other research continued
- In 2003, the Rhine Research Center hosts the Taking Flight Symposium
- Examination of psi in relation to the Ganzfeld, Decision Augmentation Theory, and other areas
- *The Gift*, a collection of psi experience, by Sally Rhine Feather and Michael Schmicker, was published in 2005
- Monthly educational events began to provide opportunities for the local community
- John Palmer begins as Research Director, 2009-2017

## 2010-Present:

- Created in 2011, Rhine Education Center, teaching online classes on parapsychology
- John Kruth becomes Executive Director of the Rhine Research Center, 2011
- The Rhine Hosts the Parapsychological Association conference in Durham in 2012
- Events and meetings are broadcast live, online, across the world for a wider community
- Research expands to include healing, PK, OBEs, and standardized research methods
- An emphasis on collaboration and cooperation produces a more vibrant and effective research environment
- The worldwide community is expanded through the use of social media and online information channels
- A new, energized board of directors establishes a stronger business foundation for the organization
- The Rhine Research Center continues publishing the *Journal of Parapsychology* -- over 80 years of primary research setting a standard for the field of Parapsychology
- The Rhine collaborates with the Society for Scientific Exploration to present a joint conference online in 2021



# Rhine Board of Directors and Advisory Committee

## Rhine Board of Directors

- Jack Hebrank, Ph.D. *President*
- Loyd Auerbach, M.S. *Vice-President*
- Jane Livingston, Ph.D. *Treasurer*
- Mark Turner *Secretary*
- John G. Kruth, M.S. *Executive Director*
- Sally Ann Drucker, Ph.D.
- Barbara Ensrud
- Sally Rhine Feather, Ph.D.
- William T. Higgins

- Joe McMoneagle
- Rebecca Rhine
- Marilyn Schlitz, Ph.D.
- Paul H. Smith, Ph.D.
- Graham Watkins, M.S.
- Laura Lynne Jackson

## Board of Advisors

- Eben Alexander
- Larry Burk
- Julie Beischel
- William Bengston
- Ed Close
- Athena Drewes
- Dale Graff
- Mitch Horowitz
- Ryan Hurd

- Stanley Krippner
- Joe McMoneagle
- Jeffrey Mishlove
- Vernon Neppe
- Graham Nicholls
- K. Ramakrishna Rao
- Stephan Schwartz
- Christine Simmonds-Moore

## The Rhine Contact Information

### Rhine Research Center

2741 Campus Walk Avenue, Bldg. 500

Durham, NC 27705

(919) 309-4600

Email: [Office@Rhine.org](mailto:Office@Rhine.org)

Website: [www.Rhine.org](http://www.Rhine.org)

The Rhine is a 501 (3) (c) organization.

Rhine Research Center Tax ID is 27-1240690.

Become a member of the Rhine at [www.Rhine.org](http://www.Rhine.org)